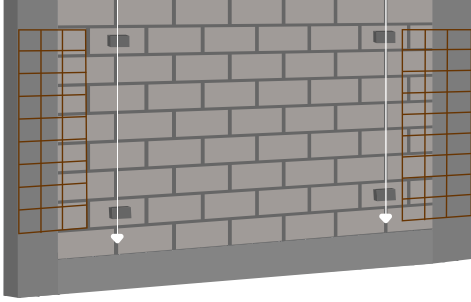


COLORED PLASTER 4MM TO 6MM

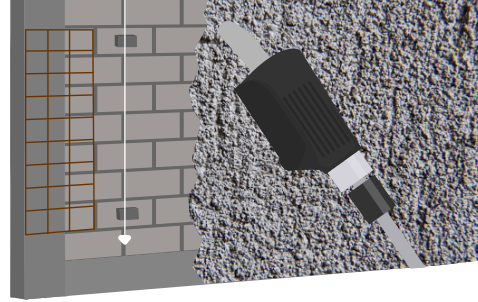
RESSICHEM[®]
adding life and value to your property

Summary of application

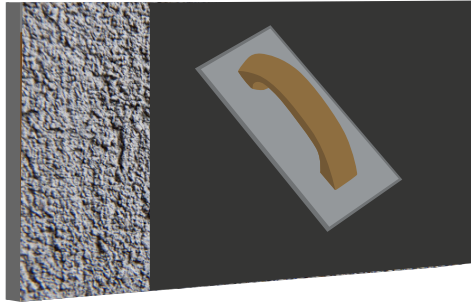
STEP 1: Surface preparation with metal mesh between the joints of concrete and masonry and application of levelling Dabs.



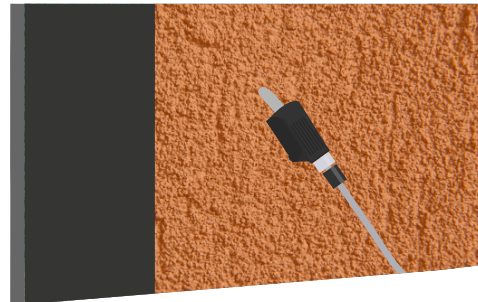
STEP 2: Application of **Ressi PlastoRend 120** directly on prepared masonry and concrete surface.



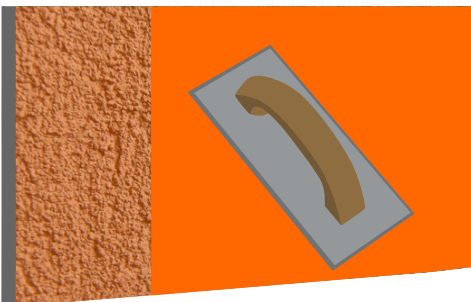
STEP 3: Finishing the surface as required.



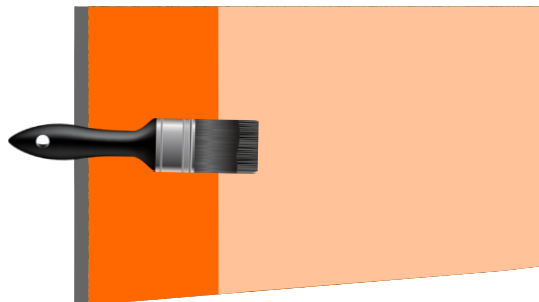
STEP 4: Application of **Ressi PlastoRend 110** over the base plastered surface.



STEP 5: Finishing the surface as required.



STEP 6: Application of **Silblock (Water Repellent Sealer)** over the prepared surface of **Ressi PlastoRend 110**.



Detailed description

There are several factors like weathering effects and pollution which affect the exterior finish of the building. With the passage of time issues like paint peel off and decay of the external finished surface cause many problems.

Ressi PlastoRend 110 is an ideal solution to such problems. This material is one of the most durable plasters out there. **Ressi PlastoRend 110** is a ready to use pigmented cement-based plaster which is applied on a roughly plastered surface at a thickness between 4mm to 6mm.

COLORED PLASTER 4MM TO 6MM

RESSICHEM[®]
adding life and value to your property

Ressi PlastoRend 110 is applied at the time of construction & should be used as a finishing plaster over the base plaster surface. (Please refer to the system of base plaster for further guidance).

Application using a plaster / render spray machine.

A spray mortar machine is brought to the job site. Electric and water connections are set into the machine. A bag of **Ressi PlastoRend 110** is torn into the machine.

Once the machine itself is setup properly, the mortar for Plastering & rendering will be mixed with water and sprayed onto the desired wall or roof surface via means of a spray gun. Whilst the material is sprayed onto the desired surface, corresponding masons' level the surface following the spray gun plaster.



TEAR:

Continually keep on tearing the bags of Ressichem Plasters & Renders into the Machine.



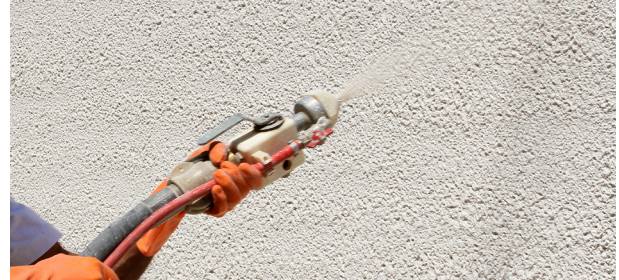
FINISH:

The plaster / render should be finished as per the desired finish required.

Only the addition of an appropriate amount of water is required on site to achieve the desired plaster consistency. These plasters can be applied by hand & can also be sprayed over the wall surface of masonry or concrete using a plaster / render spray machine.

Whilst the material is sprayed onto the desired surface, corresponding masons' level the surface following the spray gun plaster.

After the machine setup, the Ressichem plastering & rendering system can be defined into 5 simple steps.



SPRAY:

Keep on spraying the material onto the desired wall or roof surface.

Note: It is strongly recommended to further protect the finished surface of **Ressi PlastoRend 110** with **Silblock** water repellent sealer. This sealer will protect the decorative plaster of **Ressi PlastoRend 110** from various environmental damages.

COLORED PLASTER 4MM TO 6MM

System Summary

- A: Block / Brick Masonry
B: Metal Mesh
C: Levelling Dabs
D: Base Plaster or Ressi PlastoRend 120
E: Ressi PlastoRend 110 (Final Finished Surface) + Silblock

