



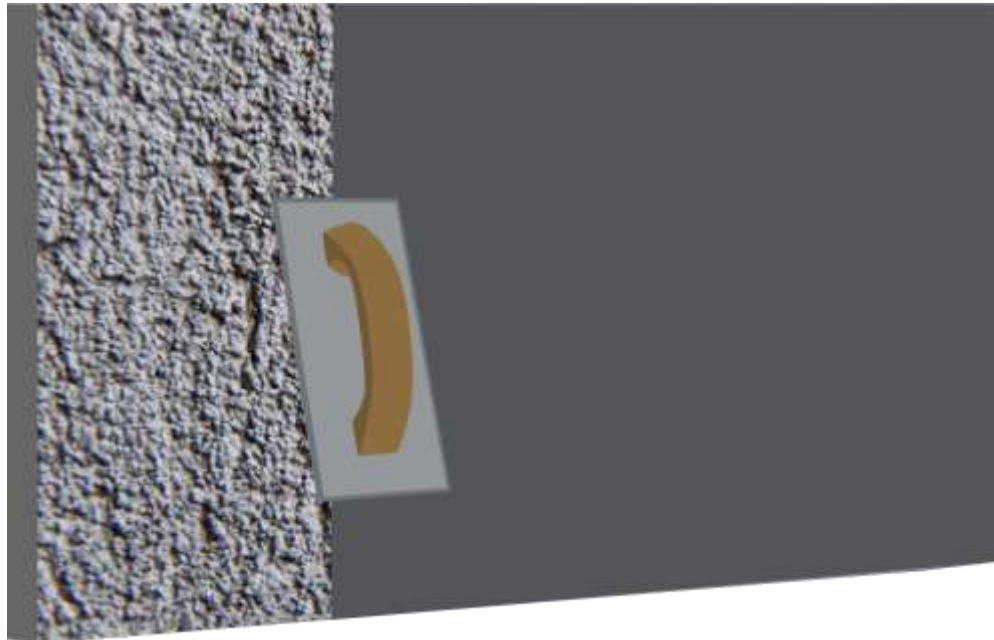
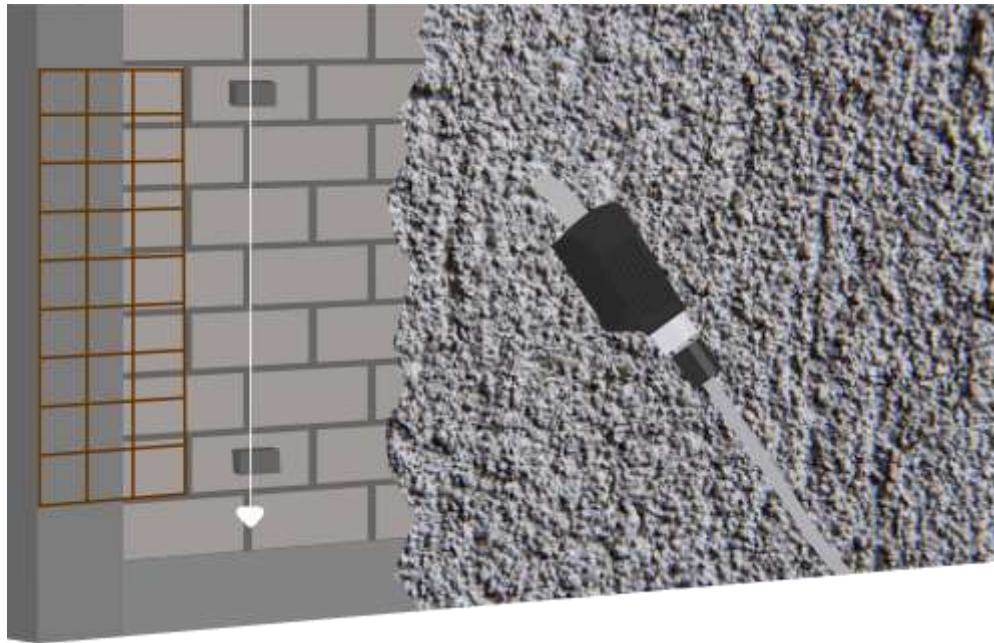
Wall Insulation System using EIFS and Insulation Plaster

Presented By Hussain Zulfiqar

RESSICHEM
adding life and value to your property

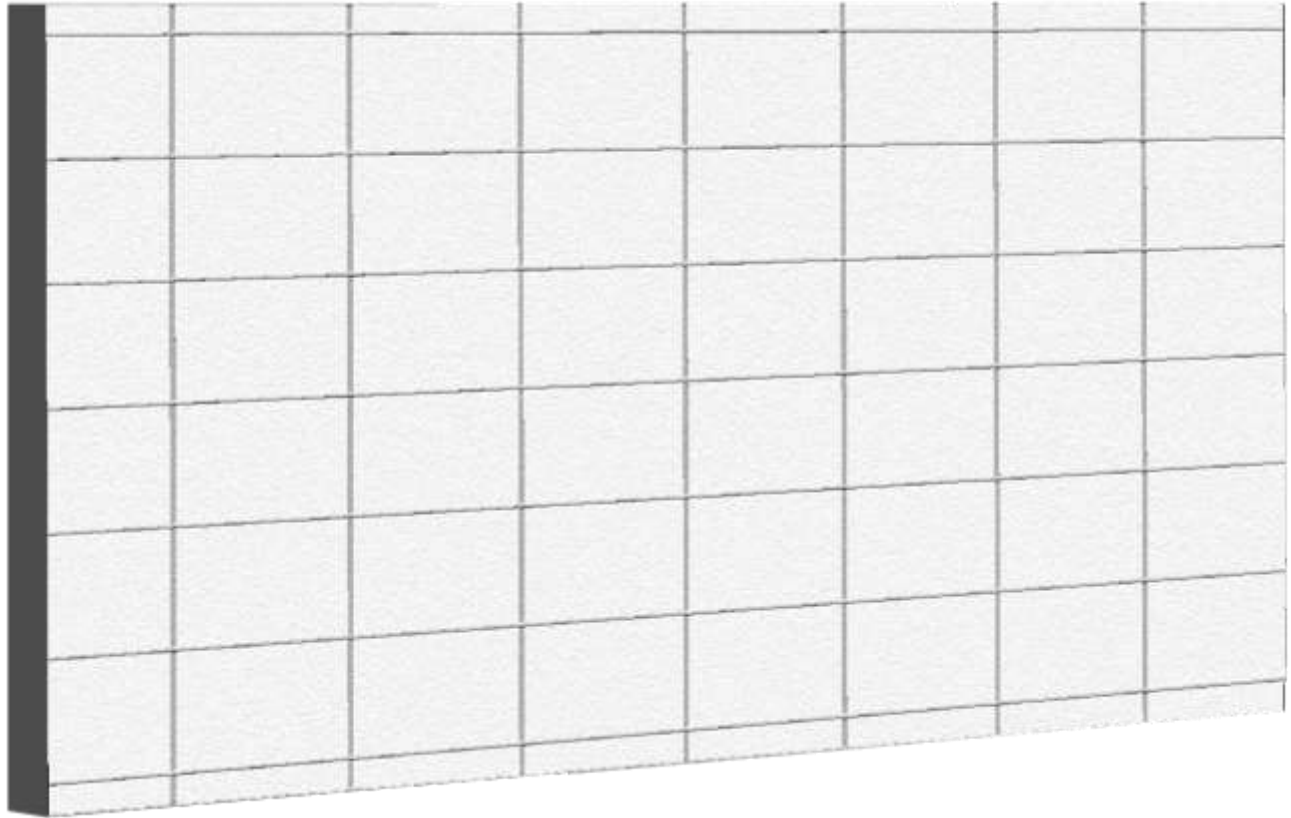
Step 1

Application of **Insulaster** over masonry and concrete surface



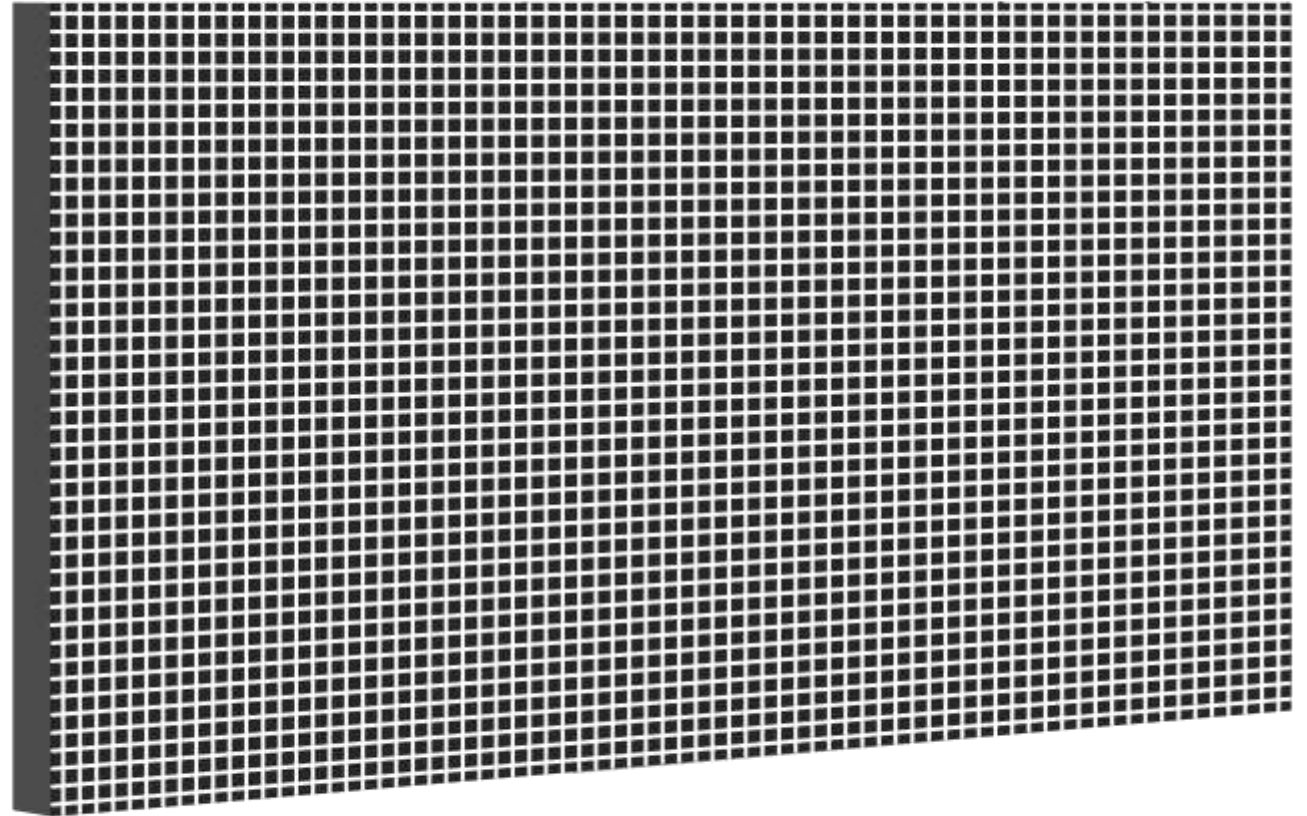
Step 2

Application of EPS sheet
over surface of
Insulaster with the use
of **Ressi Insufix 200**



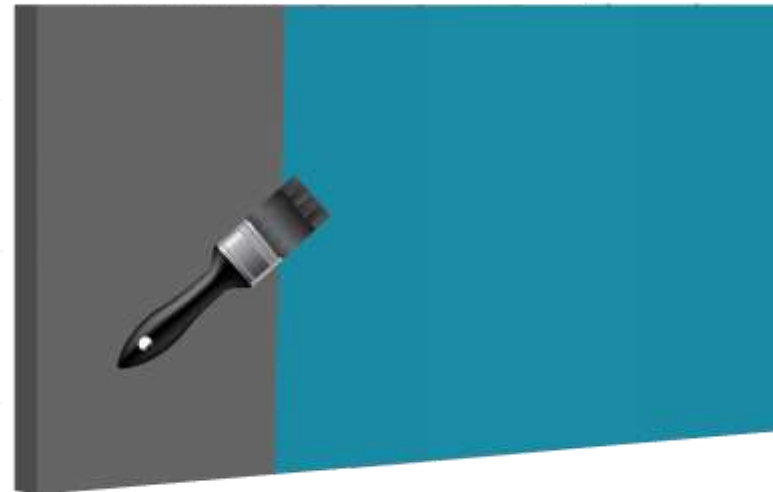
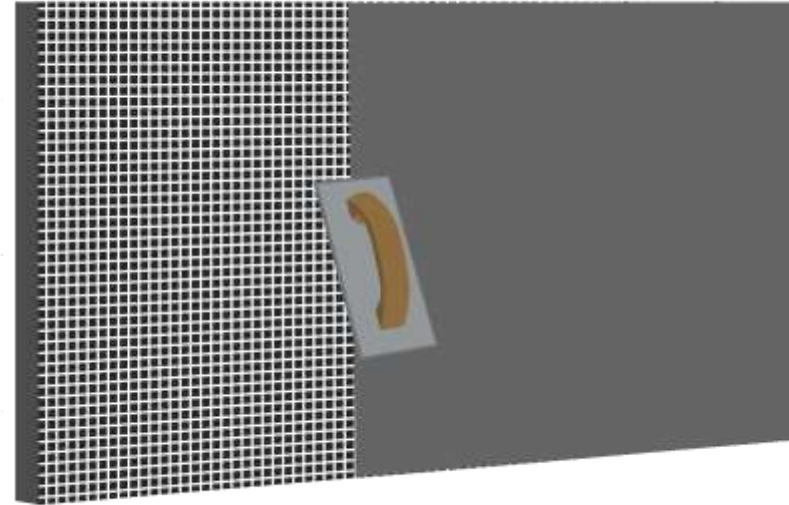
Step 3

Application of fiber
glass mesh over the EPS
Board using **Ressi
Insufix 200**



Step 4

Finishing the surface



Thank You

Where To Find Us

D-83, S.I.T.E., Industrial
Area, Manghopir Road, Karachi -
75530, Pakistan.

Mobile: +92 309 7772464

Tel: +92-21-32593800-02

Fax: +92-21-32593803

Email: info@ressichem.com

Website: www.ressichem.com

